

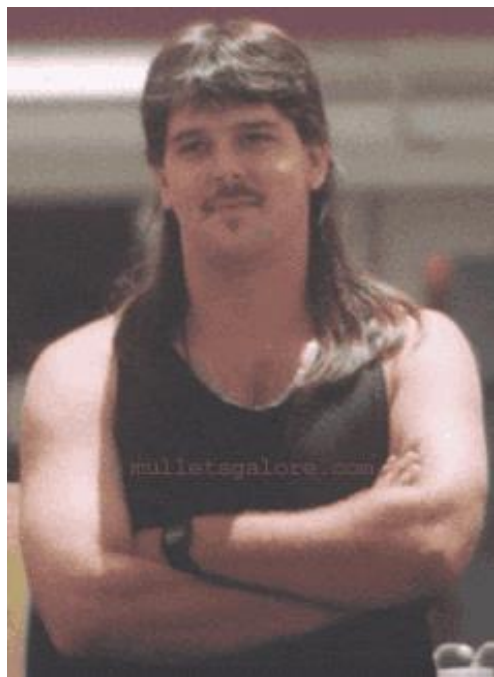
CS425: Algorithms for Web Scale Data

**Lecture 8: Recommender Systems:
Content-Based Systems &
Collaborative Filtering**

Most of the slides are from the Mining of Massive Datasets book.

These slides have been modified for CS425. The original slides can be accessed at: www.mmds.org

Example: Recommender Systems



■ Customer X

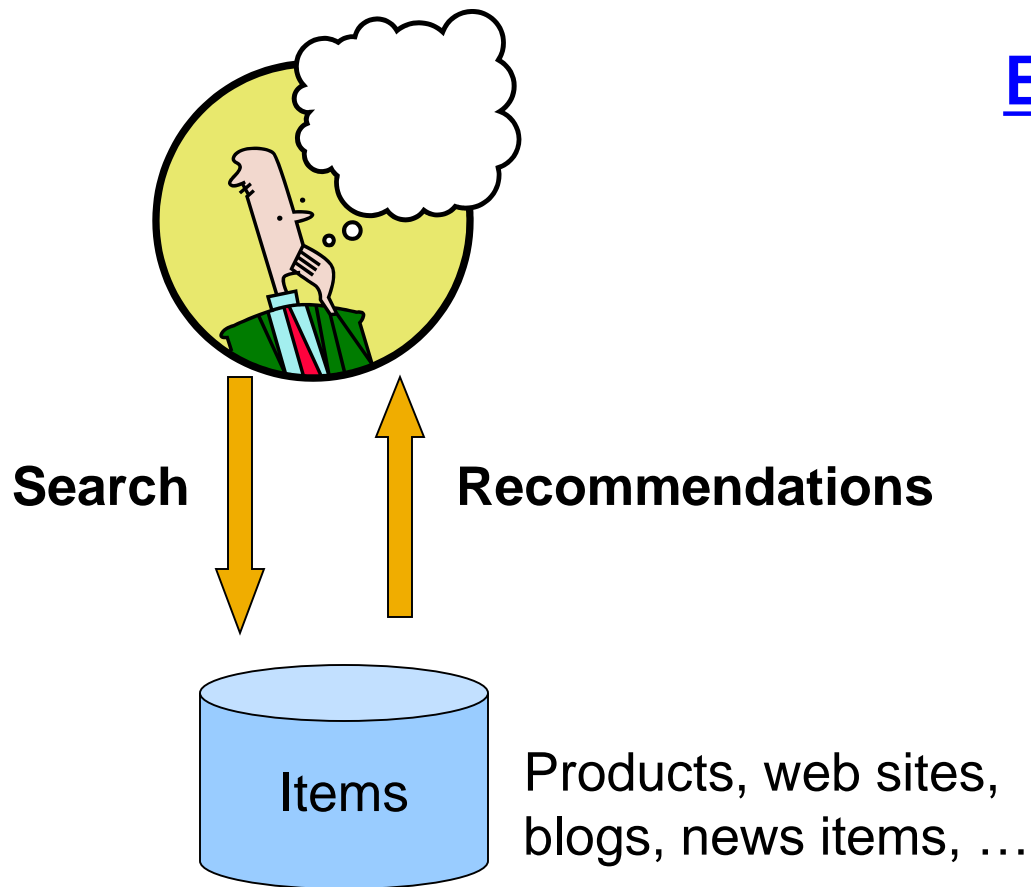
- Buys Metallica CD
- Buys Megadeth CD



■ Customer Y

- Does search on Metallica
- Recommender system suggests Megadeth from data collected about customer X

Recommendations



Examples:

amazon.com.



StumbleUpon



del.icio.us



movie lens

helping you find the *right* movies

last.fm™
the social music revolution

Google
News

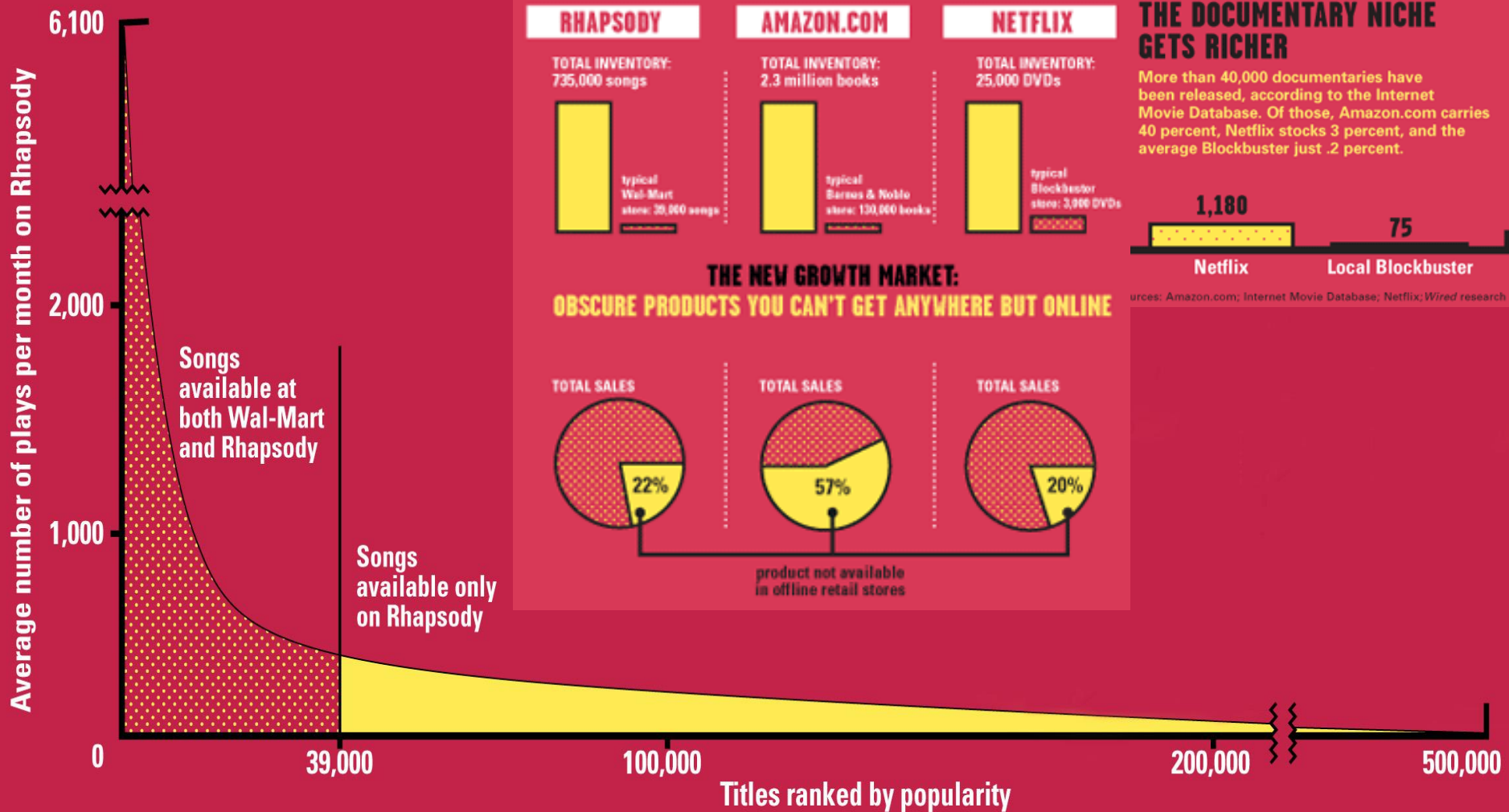
YouTube

XBOX
LIVE

From Scarcity to Abundance

- **Shelf space is a scarce commodity for traditional retailers**
 - Also: TV networks, movie theaters,...
- **Web enables near-zero-cost dissemination of information about products**
 - From scarcity to abundance
- **More choice necessitates better filters**
 - Recommendation engines
 - How **Into Thin Air** made **Touching the Void** a bestseller: <http://www.wired.com/wired/archive/12.10/tail.html>

Sidenote: The Long Tail



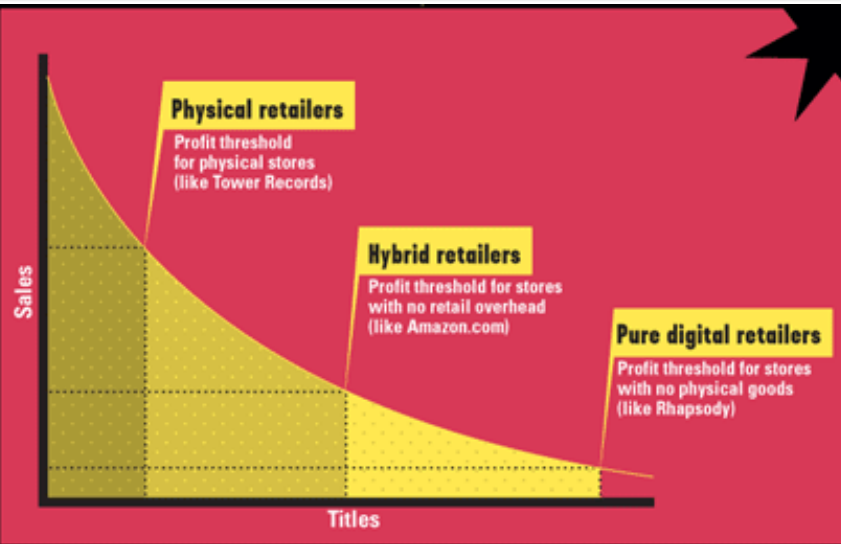
Sources: Erik Brynjolfsson and Jeffrey Hu, MIT, and Michael Smith, Carnegie Mellon; Barnes & Noble; Netflix; RealNetworks
Source: Chris Anderson (2004)

Physical vs. Online

THE BIT PLAYER ADVANTAGE

Beyond bricks and mortar there are two main retail models – one that gets halfway down the Long Tail and another that goes all the way. The first is the familiar hybrid model of Amazon and Netflix, companies that sell physical goods online. Digital catalogs allow them to offer unlimited selection along with search, reviews, and recommendations, while the cost savings of massive warehouses and no walk-in customers greatly expands the number of products they can sell profitably.

Pushing this even further are pure digital services, such as iTunes, which offer the additional savings of delivering their digital goods online at virtually no marginal cost. Since an extra database entry and a few megabytes of storage on a server cost effectively nothing, these retailers have no economic reason not to carry *everything* available.



Read <http://www.wired.com/wired/archive/12.10/tail.html> to learn more!

Types of Recommendations

- **Editorial and hand curated**
 - List of favorites
 - Lists of “essential” items
- **Simple aggregates**
 - Top 10, Most Popular, Recent Uploads
- **Tailored to individual users**
 - Amazon, Netflix, ...

Formal Model

- X = set of **Customers**
- S = set of **Items**
- **Utility function** $u: X \times S \rightarrow R$
 - R = set of ratings
 - R is a totally ordered set
 - e.g., **0-5 stars**, real number in **[0,1]**

Utility Matrix

	Avatar	LOTR	Matrix	Pirates
Alice	1		0.2	
Bob		0.5		0.3
Carol	0.2		1	
David				0.4

Key Problems

- **(1) Gathering “known” ratings for matrix**
 - How to collect the data in the utility matrix
- **(2) Extrapolate unknown ratings from the known ones**
 - Mainly interested in high unknown ratings
 - We are not interested in knowing what you don't like but what you like
- **(3) Evaluating extrapolation methods**
 - How to measure success/performance of recommendation methods

(1) Gathering Ratings

■ Explicit

- Ask people to rate items
- Doesn't work well in practice – people can't be bothered

■ Implicit

- Learn ratings from user actions
 - E.g., purchase implies high rating
- What about low ratings?

(2) Extrapolating Utilities

- **Key problem:** Utility matrix U is **sparse**
 - Most people have not rated most items
 - **Cold start:**
 - New items have no ratings
 - New users have no history
- **Three approaches to recommender systems:**
 - 1) Content-based
 - 2) Collaborative
 - 3) Latent factor based

} **This lecture**

Content-based Recommender Systems

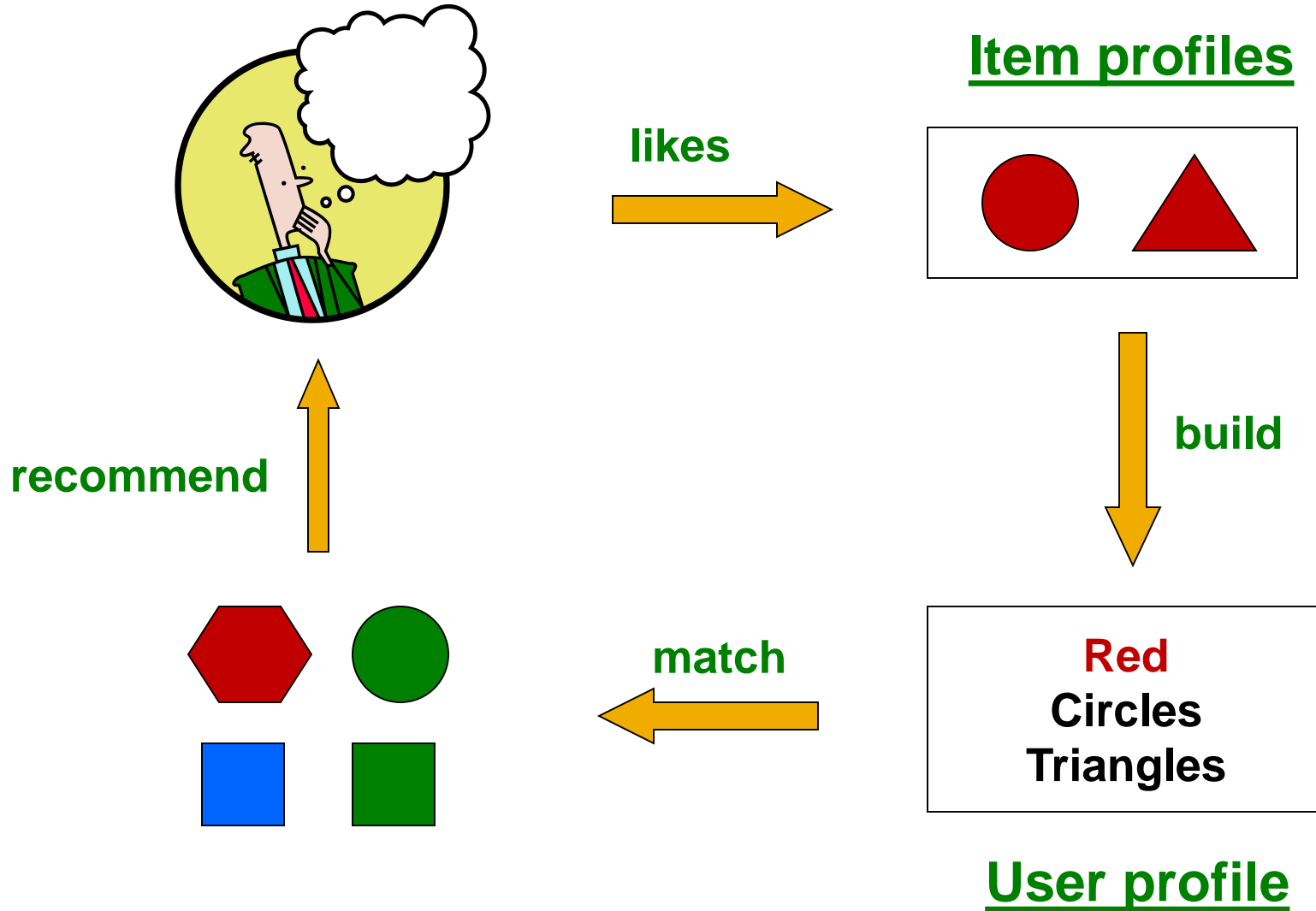
Content-based Recommendations

- **Main idea:** Recommend items to customer x similar to previous items rated highly by x

Example:

- **Movie recommendations**
 - Recommend movies with same actor(s), director, genre, ...
- **Websites, blogs, news**
 - Recommend other sites with “similar” content

Plan of Action



Item Profiles

- For each item, create an **item profile**
- **Profile is a set (vector) of features**
 - **Movies:** author, title, actor, director,...
 - **Text:** Set of “important” words in document
- **How to pick important features?**
 - Usual heuristic from text mining is **TF-IDF**
(Term frequency * Inverse Doc Frequency)
 - **Term ... Feature**
 - **Document ... Item**

Sidenote: TF-IDF

f_{ij} = frequency of term (feature) i in doc (item) j

$$TF_{ij} = \frac{f_{ij}}{\max_k f_{kj}}$$

Note: we normalize TF to discount for “longer” documents

n_i = number of docs that mention term i

N = total number of docs

$$IDF_i = \log \frac{N}{n_i}$$

TF-IDF score: $w_{ij} = TF_{ij} \times IDF_i$

Doc profile = set of words with highest **TF-IDF** scores, together with their scores

Two Types of Document Similarity

- In the LSH lecture: Lexical similarity
 - ▣ Large identical sequences of characters
- For recommendation systems: Content similarity
 - ▣ Occurrences of common important words
 - ▣ TF-IDF score: If an uncommon word appears more frequently in two documents, it contributes to similarity.
- Similar techniques (e.g. MinHashing and LSH) are still applicable.

Representing Item Profiles

- A vector entry for each feature
 - ▣ Boolean features
 - e.g. One bool feature for every actor, director, genre, etc.
 - ▣ Numeric features
 - e.g. Budget of a movie, TF-IDF for a document, etc.
- We may need weighting terms for normalization of features

	Spielberg	Scorsese	Tarantino	Lynch	Budget
Jurassic Park	1	0	0	0	63M
Departed	0	1	0	0	90M
Eraserhead	0	0	0	1	20K
Twin Peaks	0	0	0	1	10M

User Profiles – Option 1

- Option 1: Weighted average of rated item profiles

Utility matrix (ratings 1-5)

	Jurassic Park	Minority Report	Schindler's List	Departed	Aviator	Eraser head	Twin Peaks
User 1	4		5			1	1
User 2	2	3			1	5	4
User 3		5	4	5	5		3

User profile(ratings 1-5)

	Spielberg	Scorcese	Lynch
User 1	4.5	0	1
User 2	2.5	1	4.5
User 3	4.5	5	3

Missing scores similar to bad scores

User Profiles – Option 2 (Better)

- Option 2: Subtract average values from ratings first

Utility matrix (ratings 1-5)

	Jurassic Park	Minority Report	Schindler's List	Departed	Aviator	Eraser head	Twin Peaks	Avg
User 1	4		5	0		1	1	2.75
User 2	2	3			1	5	4	3
User 3		5	4	5	5		3	4.4

User Profiles – Option 2 (Better)

- Option 2: Subtract average values from ratings first

Utility matrix (ratings 1-5)

	Jurassic Park	Minority Report	Schindler's List	Departed	Aviator	Eraser head	Twin Peaks	Avg
User 1	1.25		2.25			-1.75	-1.75	2.75
User 2	-1	0			-2	3	1	3
User 3		0.6	-0.4	0.6	0.6		-1.4	4.4

User profile

	Spielberg	Scorsese	Lynch
User 1	1.75	0	-1.75
User 2	-0.5	-2	2
User 3	-0.1	0.6	-1.4

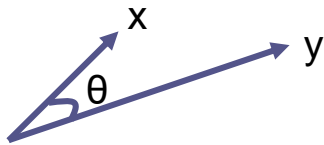
Prediction Heuristic

- Given:
 - ▣ A feature vector for **user U**
 - ▣ A feature vector for **movie M**
- Predict **user U's rating** for **movie M**
- Which distance metric to use?

- Cosine distance is a good candidate
 - ▣ Works on weighted vectors
 - ▣ Only directions are important, not the magnitude
 - The magnitudes of vectors may be very different in movies and users

Reminder: Cosine Distance

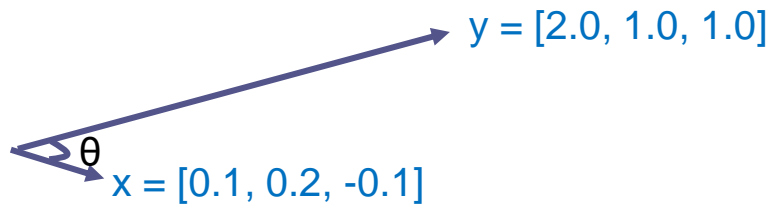
- Consider x and y represented as vectors in an n -dimensional space



$$\cos(\theta) = \frac{x \cdot y}{\|x\| \cdot \|y\|}$$

- The cosine distance is defined as the θ value
 - ▣ Or, cosine similarity is defined as $\cos(\theta)$
- Only direction of vectors considered, not the magnitudes
- Useful when we are dealing with vector spaces

Reminder: Cosine Distance - Example



$$\begin{aligned}\cos(\theta) &= \frac{x \cdot y}{\|x\| \cdot \|y\|} = \frac{0.2 + 0.2 - 0.1}{\sqrt{0.01 + 0.04 + 0.01} \cdot \sqrt{4 + 1 + 1}} \\ &= \frac{0.3}{\sqrt{0.36}} = 0.5 \rightarrow \theta = 60^\circ\end{aligned}$$

Note: The distance is independent of vector magnitudes

Prediction Example

Predict the rating of user U for movies 1, 2, and 3

	Actor 1	Actor 2	Actor 3	Actor 4
User U	-0.6	0.6	-1.5	2.0
Movie 1	1	1	0	0
Movie 2	1	0	1	0
Movie 3	0	1	0	1

User and movie feature vectors

Prediction Example

Predict the rating of user U for movies 1, 2, and 3

	Actor 1	Actor 2	Actor 3	Actor 4	Vector Magn.
User U	-0.6	0.6	-1.5	2.0	2.6
Movie 1	1	1	0	0	1.4
Movie 2	1	0	1	0	1.4
Movie 3	0	1	0	1	1.4

Prediction Example

Predict the rating of user U for movies 1, 2, and 3

	Actor 1	Actor 2	Actor 3	Actor 4	Vector Magn.	Cosine Sim
User U	-0.6	0.6	-1.5	2.0	2.6	
Movie 1	1	1	0	0	1.4	0
Movie 2	1	0	1	0	1.4	-0.6
Movie 3	0	1	0	1	1.4	0.7

Prediction Example

Predict the rating of user U for movies 1, 2, and 3

	Actor 1	Actor 2	Actor 3	Actor 4	Vector Magn.	Cosine Sim	Cosine Dist
User U	-0.6	0.6	-1.5	2.0	2.6		
Movie 1	1	1	0	0	1.4	0	90°
Movie 2	1	0	1	0	1.4	-0.6	124°
Movie 3	0	1	0	1	1.4	0.7	46°

Prediction Example

Predict the rating of user U for movies 1, 2, and 3

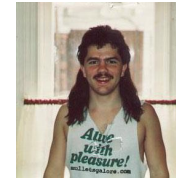
	Actor 1	Actor 2	Actor 3	Actor 4	Vector Magn.	Cosine Sim	Cosine Dist	Interpretation
User U	-0.6	0.6	-1.5	2.0	2.6			
Movie 1	1	1	0	0	1.4	0	90°	Neither likes nor dislikes
Movie 2	1	0	1	0	1.4	-0.6	124°	Dislikes
Movie 3	0	1	0	1	1.4	0.7	46°	Likes

Content-Based Approach: True or False?

- Need data on other users

False

- Can handle users with unique tastes



*Likes Metallica,
Sinatra and Bieber*

True – no need to have similarity with other users

- Can handle new items easily

True – well-defined features for items

- Can handle new users easily

False – how to construct user-profiles?

- Can provide explanations for the predicted recommendations

True – know which features contributed to the ratings

Pros: Content-based Approach

- **+: No need for data on other users**
 - No cold-start or sparsity problems
- **+: Able to recommend to users with unique tastes**
- **+: Able to recommend new & unpopular items**
 - No first-rater problem
- **+: Able to provide explanations**
 - Can provide explanations of recommended items by listing content-features that caused an item to be recommended

Cons: Content-based Approach

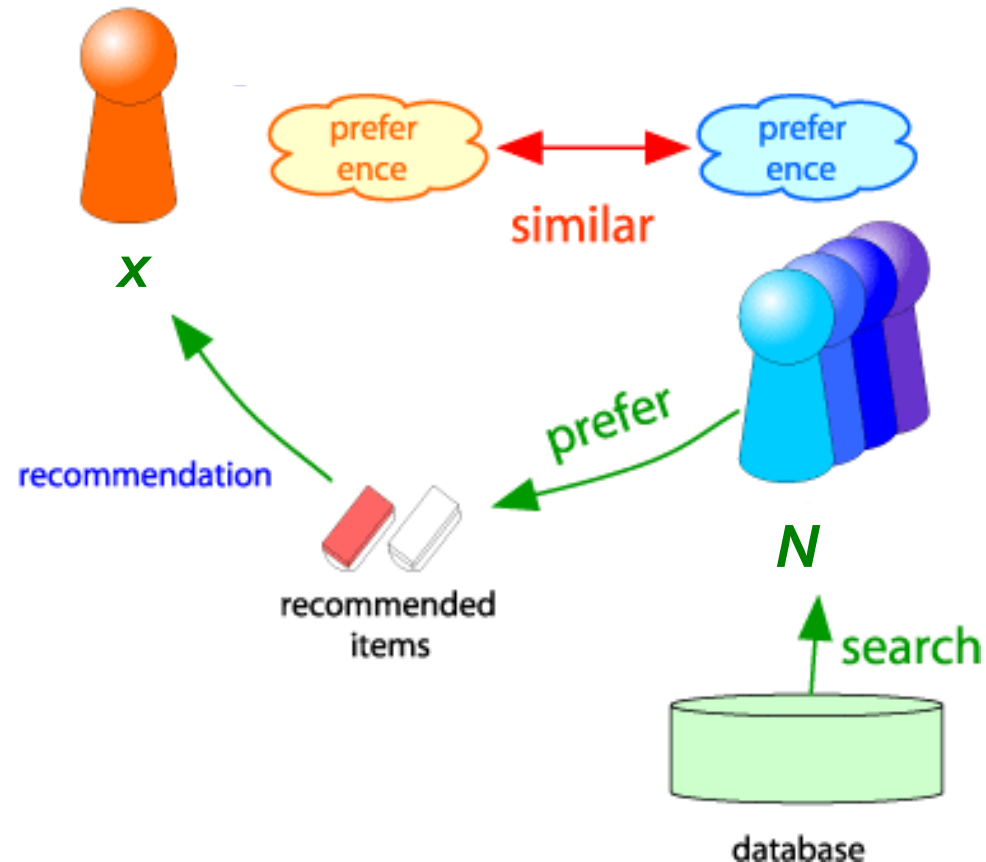
- **–: Finding the appropriate features is hard**
 - E.g., images, movies, music
- **–: Recommendations for new users**
 - **How to build a user profile?**
- **–: Overspecialization**
 - Never recommends items outside user's content profile
 - People might have multiple interests
 - **Unable to exploit quality judgments of other users**
 - e.g. Users who like director X also like director Y
User U rated X, but doesn't know about Y

Collaborative Filtering

Harnessing quality judgments of other users

Collaborative Filtering

- Consider user x
- Find set N of other users whose ratings are “**similar**” to x ’s ratings
- Estimate x ’s ratings based on ratings of users in N



Finding “Similar” Users

$$r_x = \begin{bmatrix} * & _ & _ & * & *** \\ * & _ & ** & ** & _ \end{bmatrix}$$

- Let r_x be the vector of user x 's ratings

- Jaccard similarity measure**

- Problem:** Ignores the value of the rating

r_x, r_y as sets:

$$r_x = \{1, 4, 5\}$$

$$r_y = \{1, 3, 4\}$$

- Cosine similarity measure**

- $\text{sim}(x, y) = \cos(r_x, r_y) = \frac{r_x \cdot r_y}{\|r_x\| \cdot \|r_y\|}$

r_x, r_y as points:

$$r_x = \{1, 0, 0, 1, 3\}$$

$$r_y = \{1, 0, 2, 2, 0\}$$

- Problem:** Treats missing ratings as “negative”

- Pearson correlation coefficient**

- S_{xy} = items rated by both users x and y

$$\text{sim}(x, y) = \frac{\sum_{s \in S_{xy}} (r_{xs} - \bar{r}_x)(r_{ys} - \bar{r}_y)}{\sqrt{\sum_{s \in S_{xy}} (r_{xs} - \bar{r}_x)^2} \sqrt{\sum_{s \in S_{xy}} (r_{ys} - \bar{r}_y)^2}}$$

$\bar{r}_x, \bar{r}_y \dots$ avg. rating of x, y

Similarity Metric

Cosine sim:

$$\text{sim}(x, y) = \frac{\sum_i r_{xi} \cdot r_{yi}}{\sqrt{\sum_i r_{xi}^2} \cdot \sqrt{\sum_i r_{yi}^2}}$$

	HP1	HP2	HP3	TW	SW1	SW2	SW3
A	4			5	1		
B	5	5	4				
C				2	4	5	
D		3					3

- **Intuitively we want:** $\text{sim}(A, B) > \text{sim}(A, C)$
- **Jaccard similarity:** $1/5 < 2/4$
- **Cosine similarity:** $0.386 > 0.322$
 - Considers missing ratings as “negative”

■ **Solution: subtract the (row) mean**

	HP1	HP2	HP3	TW	SW1	SW2	SW3
A	2/3			5/3	-7/3		
B	1/3	1/3	-2/3				
C				-5/3	1/3	4/3	
D		0					0

**sim A,B vs. A,C:
 $0.092 > -0.559$**

Notice cosine sim. is correlation when data is centered at 0

Rating Predictions

From similarity metric to recommendations:

- Let r_x be the vector of user x 's ratings
- Let N be the set of k users most similar to x who have rated item i

■ Prediction for item i of user x :

- $r_{xi} = \frac{1}{k} \sum_{y \in N} r_{yi}$

Shorthand:

$$s_{xy} = \text{sim}(x, y)$$

- $r_{xi} = \frac{\sum_{y \in N} s_{xy} \cdot r_{yi}}{\sum_{y \in N} s_{xy}}$

- Other options?

■ Many other tricks possible...

Rating Predictions

Predict the rating of A for HP2:

	HP1	HP2	HP3	TW	SW1	SW2	SW3	<u>similarity of A</u>
A	4			5	1			
B	5	5	4					0.09
C				2	4	5		-0.56
D		3					3	0

Prediction based on the top 2 neighbors who have also rated HP2

$$\text{Option 1: } r_{xi} = \frac{1}{k} \sum_{y \in N} r_{yi}$$

$$r_{A,HP2} = (5+3) / 2 = 4$$

Rating Predictions

Predict the rating of A for HP2:

	HP1	HP2	HP3	TW	SW1	SW2	SW3	<u>similarity of A</u>
A	4			5	1			
B	5	5	4					0.09
C				2	4	5		-0.56
D		3					3	0

Prediction based on the top 2 neighbors who have also rated HP2

$$\text{Option 2: } r_{xi} = \frac{\sum_{y \in N} s_{xy} \cdot r_{yi}}{\sum_{y \in N} s_{xy}}$$

$$r_{A,HP2} = (5 \times 0.09 + 3 \times 0) / 0.09 = 5$$

Item-Item Collaborative Filtering

- So far: **User-user collaborative filtering**
- **Another view: Item-item**
 - For item i , find other similar items
 - Estimate rating for item i based on ratings for similar items
 - Can use same similarity metrics and prediction functions as in user-user model

$$r_{xi} = \frac{\sum_{j \in N(i; \mathbf{x})} s_{ij} \cdot r_{xj}}{\sum_{j \in N(i; \mathbf{x})} s_{ij}}$$

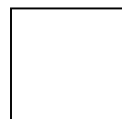
s_{ij} ... similarity of items i and j
 r_{xj} ... rating of user u on item j
 $N(i; \mathbf{x})$... set items rated by \mathbf{x} similar to i

Item-Item CF ($|N|=2$)

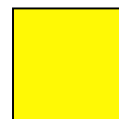
users

movies

	1	2	3	4	5	6	7	8	9	10	11	12
1	1		3			5			5		4	
2			5	4			4			2	1	3
3	2	4		1	2		3		4	3	5	
4		2	4		5			4			2	
5			4	3	4	2					2	5
6	1		3		3			2			4	



- unknown rating



- rating between 1 to 5

Item-Item CF ($|N|=2$)

users

	1	2	3	4	5	6	7	8	9	10	11	12
1	1		3		?	5			5		4	
2			5	4			4			2	1	3
3	2	4		1	2		3		4	3	5	
4		2	4		5			4			2	
5			4	3	4	2					2	5
6	1		3		3			2			4	

movies



- estimate rating of movie **1** by user **5**

Item-Item CF ($|N|=2$)

		users												
		1	2	3	4	5	6	7	8	9	10	11	12	sim(1,m)
movies	1	1		3		?	5			5		4		1.00
	2			5	4			4			2	1	3	-0.18
	<u>3</u>	2	4		1	2		3		4	3	5		0.41
	4		2	4		5			4			2		-0.10
	5			4	3	4	2					2	5	-0.31
	<u>6</u>	1		3		3			2			4		0.59

Neighbor selection:
Identify movies similar to movie 1, rated by user 5

Here we use Pearson correlation as similarity:

1) Subtract mean rating m_i from each movie i

$$m_1 = (1+3+5+5+4)/5 = 3.6$$

row 1: $[-2.6, 0, -0.6, 0, 0, 1.4, 0, 0, 1.4, 0, 0.4, 0]$

2) Compute cosine similarities between rows

Item-Item CF ($|N|=2$)

		users													
		1	2	3	4	5	6	7	8	9	10	11	12	sim(1,m)	
movies	1	1		3		?	5			5		4		1.00	
	2			5	4			4			2	1	3	-0.18	
	<u>3</u>	2	4		1	2		3		4	3	5		<u>0.41</u>	
	4		2	4		5			4			2		-0.10	
	5			4	3	4	2					2	5	-0.31	
	<u>6</u>	1		3		3			2			4		<u>0.59</u>	

Neighbor selection:
 Identify movies similar to
 movie 1, rated by user 5

Here we use Pearson correlation as similarity:

1) Subtract mean rating m_i from each movie i

$$m_1 = (1+3+5+5+4)/5 = 3.6$$

row 1: [-2.6, 0, -0.6, 0, 0, 1.4, 0, 0, 1.4, 0, 0.4, 0]

2) Compute cosine similarities between rows

Item-Item CF ($|N|=2$)

		users												
		1	2	3	4	5	6	7	8	9	10	11	12	
movies	1	1		3		?	5			5		4		sim(1,m) 1.00
	2			5	4			4			2	1	3	-0.18
	<u>3</u>	2	4		1	2		3		4	3	5		<u>0.41</u>
	4		2	4		5			4			2		-0.10
	5			4	3	4	2					2	5	-0.31
	<u>6</u>	1		3		3			2			4		<u>0.59</u>

Compute similarity weights:

$s_{1,3}=0.41, s_{1,6}=0.59$

Item-Item CF ($|N|=2$)

		users											
		1	2	3	4	5	6	7	8	9	10	11	12
movies	1	1		3		2.6	5			5		4	
	2			5	4			4			2	1	3
	<u>3</u>	2	4		1	2		3		4	3	5	
	4		2	4		5			4			2	
	5			4	3	4	2					2	5
	<u>6</u>	1		3		3			2			4	

Predict by taking weighted average:

$$r_{1.5} = (0.41 \cdot 2 + 0.59 \cdot 3) / (0.41 + 0.59) = 2.6$$

$$r_{ix} = \frac{\sum_{j \in N(i;x)} s_{ij} \cdot r_{jx}}{\sum s_{ij}}$$

CF: Common Practice

Before:

$$r_{xi} = \frac{\sum_{j \in N(i;x)} s_{ij} r_{xj}}{\sum_{j \in N(i;x)} s_{ij}}$$

- Define **similarity** s_{ij} of items i and j
- Select k nearest neighbors $N(i; x)$
 - Items most similar to i , that were rated by x
- Estimate rating r_{xi} as the weighted average:

$$r_{xi} = b_{xi} + \frac{\sum_{j \in N(i;x)} s_{ij} \cdot (r_{xj} - b_{xj})}{\sum_{j \in N(i;x)} s_{ij}}$$

baseline estimate for r_{xi}

$$b_{xi} = \mu + b_x + b_i$$

- μ = overall mean movie rating
- b_x = rating deviation of user x
= (avg. rating of user x) - μ
- b_i = rating deviation of movie i

Example

- The global movie rating is $\mu = 2.8$
i.e. average of all ratings of all users is 2.8
- The average rating of user x is $\mu_x = 3.5$
- Rating deviation of user x is $b_x = \mu_x - \mu = 0.7$
i.e. this user's avg rating is 0.7 larger than global avg
- The average rating for movie i is $\mu_i = 2.6$
- Rating deviation of movie i is $b_i = \mu_i - \mu = -0.2$
i.e. this movie's avg rating is 0.2 less than global avg

- Baseline estimate for user x and movie i is
$$b_{xi} = \mu + b_x + b_i = 2.8 + 0.7 - 0.2 = 3.3$$

Example (cont'd)

$$r_{xi} = b_{xi} + \frac{\sum_{j \in N(i;x)} s_{ij} \cdot (r_{xj} - b_{xj})}{\sum_{j \in N(i;x)} s_{ij}}$$

- Items **k** and **m**: The most similar items to *i* that are also rated by *x*
Assume both have similarity values of **0.4**

- Assume:

$$r_{xk} = 2 \text{ and } b_{xk} = 3.2 \quad \rightarrow \text{deviation of } -1.2$$

$$r_{xm} = 3 \text{ and } b_{xm} = 3.8 \quad \rightarrow \text{deviation of } -0.8$$

Example (cont'd)

$$r_{xi} = b_{xi} + \frac{\sum_{j \in N(i;x)} s_{ij} \cdot (r_{xj} - b_{xj})}{\sum_{j \in N(i;x)} s_{ij}}$$

Rating r_{xi} is the baseline rating plus the weighted avg of deviations of the most similar items' ratings:

$$r_{xi} = 3.3 + \frac{0.4 \times (-1.2) + 0.4 \times (-0.8)}{0.4 + 0.4} = 2.3$$

Item-Item vs. User-User

	Avatar	LOTR	Matrix	Pirates
Alice	1		0.8	
Bob		0.5		0.3
Carol	0.9		1	0.8
David			1	0.4

- In practice, it has been observed that item-item often works better than user-user
- **Why?** Items are simpler, users have multiple tastes

Collaborating Filtering: True or False?

- Need data on other users

True

- Effective for users with unique tastes and esoteric items

False – relies on similarity between users or items

- Can handle new items easily

False – cold start problems

- Can handle new users easily

False – cold start problems

- Can provide explanations for the predicted recommendations

User-user: False – “because users X, Y, Z also liked it”

Item-item: True – “because you also liked items i, j, k”

Pros/Cons of Collaborative Filtering

- **+ Works for any kind of item**
 - No feature selection needed
- **- Cold Start:**
 - Need enough users in the system to find a match
- **- Sparsity:**
 - The user/ratings matrix is sparse
 - Hard to find users that have rated the same items
- **- First rater:**
 - Cannot recommend an item that has not been previously rated
 - New items, Esoteric items
- **- Popularity bias:**
 - Cannot recommend items to someone with unique taste
 - Tends to recommend popular items

Hybrid Methods

- **Implement two or more different recommenders and combine predictions**
 - Perhaps using a linear model
- **Add content-based methods to collaborative filtering**
 - Item profiles for new item problem
 - Demographics to deal with new user problem

Item/User Clustering to Reduce Sparsity

	HP1	HP2	HP3	TW	SW1	SW2	SW3
<i>A</i>	4			5	1		
<i>B</i>	5	5	4				
<i>C</i>				2	4	5	
<i>D</i>		3					3



	HP	TW	SW
<i>A</i>	4	5	1
<i>B</i>	4.67		
<i>C</i>		2	4.5
<i>D</i>	3		3

Remarks & Practical Tips

- Evaluation
- Error metrics
- Complexity / Speed

Evaluation

movies

users

1	3	4			
	3	5			5
		4	5		5
		3			
		3			
2			2		2
				5	
	2	1			1
	3			3	
1					

Evaluation

movies

users

1	3	4			
	3	5			5
		4	5		5
		3			
		3			
2			?		?
				?	
	2	1			?
	3			?	
1					

Test Data Set

Evaluating Predictions

- **Compare predictions with known ratings**
 - **Root-mean-square error (RMSE)**

$$\sqrt{\sum_{xi} (r_{xi} - r_{xi}^*)^2}$$

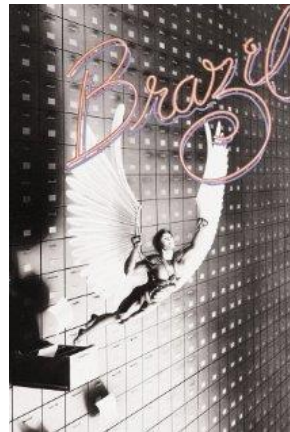
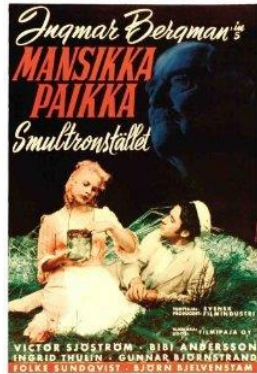
where r_{xi} is predicted, r_{xi}^* is the true rating of x on i

- **Another approach: 0/1 model**
 - **Coverage:**
 - Number of items/users for which system can make predictions
 - **Precision:**
 - Accuracy of predictions
 - **Receiver operating characteristic (ROC)**
 - Tradeoff curve between true positives and false positives

Problems with Error Measures

- **Narrow focus on accuracy sometimes misses the point**
 - Prediction Context
 - Prediction Diversity

Prediction Diversity Problem



Problems with Error Measures

- **In practice, we care only to predict high ratings:**
 - RMSE might penalize a method that does well for high ratings and badly for others
 - Alternative: Precision at top k

Collaborative Filtering: Complexity

- Expensive step is finding k most similar customers: $O(|X|)$
- **Too expensive to do at runtime**
 - Could pre-compute
- Naïve pre-computation takes time $O(k \cdot |X|)$
 - X ... set of customers
- **We already know how to do this!**
 - Near-neighbor search in high dimensions (**LSH**)
 - Clustering
 - Dimensionality reduction

Tip: Add Data

- **Leverage all the data**
 - Don't try to reduce data size in an effort to make fancy algorithms work
 - Simple methods on large data do best
- **Add more data**
 - e.g., add IMDB data on genres
- **More data beats better algorithms**

<http://anand.typepad.com/datawocky/2008/03/more-data-usual.html>