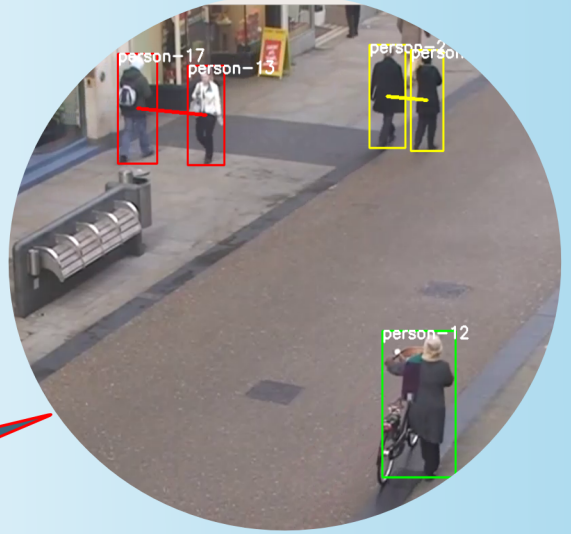




Third Eye

Since the COVID-19 pandemic started, social distancing has become regular in our everyday life and helps reduce the spread rate of the virus. Third Eye is a computer vision based application to make sure social distancing and mask management is regulated and keeps your social space safe. It uses computer vision to predict the distances between people and alerts the user if there are any infringements. It also features a mask detection system so that users could detect whether people are wearing masks or not. By using the video footage, it runs an analysis and reports the results.



- Unsafe
- Unsafe but possible relatives/friends
- Safe

Third Eye



RealTime Social Distancing

Mask Detecting

Credits

Third Eye Credits

Members:

- ⊙ Göktuğ Öztürkcan,
 - ⊙ Alkim Önen
 - ⊙ İbrahim Eren Tilla
 - ⊙ Berke Oğuz
 - ⊙ Safa Alperen Oruç
- Supervisor: Fazlı Can
- Jury Members:
- ⊙ Can Alkan
 - ⊙ Çiğdem Gündüz Demir

Back

